

2016 Village of Bellevue

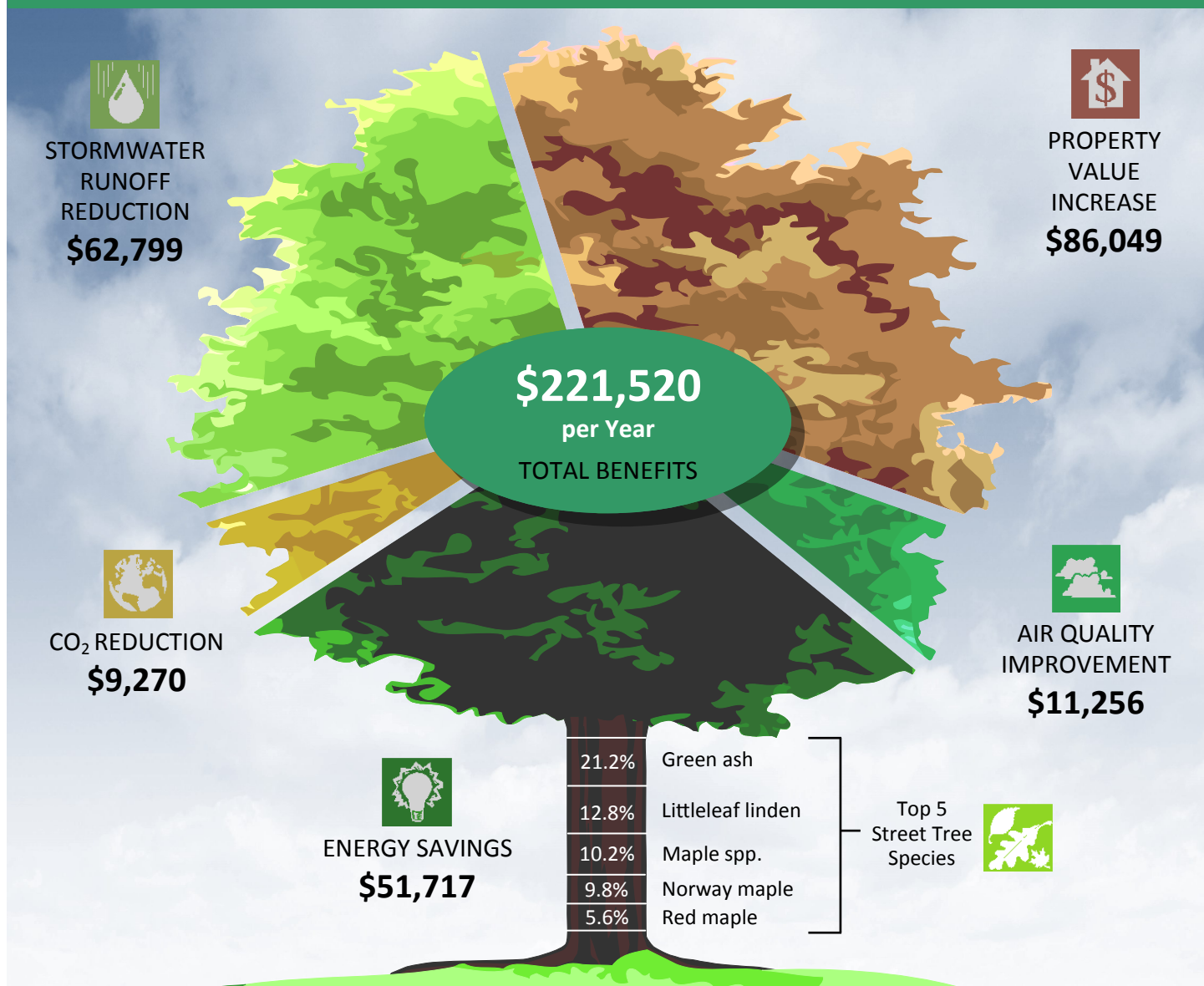
Street Tree Benefits

Bellevue street trees provide millions of dollars of environmental, economic and aesthetic benefits to the community. Over their lifetime, street tree benefits exceed the costs of planting and care, representing a 300 percent return on investment. Tree benefits increase over time highlighting the importance of not only planting trees, but of providing ongoing maintenance and protection. These benefits are a reminder of the worthwhile investment in our community forestry program.

Trees:

- Reduce stormwater runoff
- Lower summer air temperatures
- Reduce air pollution
- Reduce heating and cooling costs
- Reduce atmospheric carbon dioxide (CO₂)
- Enhance property values
- Provide wildlife habitat
- Improve health and wellbeing
- Improve learning and concentration
- Provide aesthetic benefits

Annually **Bellevue** public street trees provide¹...





Trees Reduce Stormwater Runoff and Improve Water Quality

Trees reduce peak stormwater runoff and associated pollutants entering local water bodies. Trees reduce stormwater volumes by intercepting a portion of rainfall, which evaporates and never reaches the ground. Tree roots also increase rainfall infiltration and storage in the soil. And tree canopies reduce soil erosion by diminishing the impact of raindrops on barren surfaces.

Street trees in Bellevue intercept 2,317,323 gallons of water annually for a savings of \$62,799.



Trees Reduce Atmospheric Carbon Dioxide

Trees reduce atmospheric carbon by capturing and storing CO₂ as they grow. By reducing demand for heating and cooling, trees indirectly reduce CO₂ by avoiding power plant emissions associated with energy production.

Street trees in Bellevue capture 685,593 tons of atmospheric CO₂ per year. Annual savings including indirect costs are \$9,270. Street trees also store approximately 5,536,846 tons of atmospheric CO₂ for a total savings of \$41,526.



Trees Improve Air Quality

Trees improve air quality by trapping particulates, absorbing gaseous pollutants, and releasing oxygen. By cooling urban heat islands and shading parked cars, trees indirectly reduce ozone levels. The Environmental Protection Agency recognizes tree planting as an ozone reduction measure in state implementation plans.

Street trees in Bellevue remove 139.9 lbs. of particulate matter, 228.8lbs. of ozone, 11.1 lbs. of sulfur dioxide and 38.5 lbs. of nitrogen oxides annually. Total annual savings including indirect costs are \$11,256.

¹Analysis was conducted using iTree Streets. iTree Streets is a street tree management and analysis tool for urban forest managers that uses tree inventory data to quantify the dollar value of annual environmental and aesthetic benefits. The iTree Suite is a free state-of-the-art peer reviewed software suite from the USDA Forest Service. www.itreetool.org.

Tree graphic concept courtesy of City of New York Department of Parks & Recreation.



Trees Save Energy

Trees reduce the demand for energy to heat and cool buildings by providing shade, lowering summertime temperatures, and reducing windspeeds. Secondary benefits are reduced water consumption and pollutants emissions by local power plants.

Street trees in Bellevue save approximately 346.7 MWH of electricity and 48,394.4 Therms of natural gas annually for a savings of \$51,717.



Trees Improve Property Values and Beautify Our Communities

Trees are the single strongest positive influence on scenic quality in our community! They increase the attractiveness of retail business areas. Studies found shoppers are willing to pay up to 11% more for goods and services in a well-landscaped business district. Trees increase property values. People will pay 3-7% more for properties with many trees. Trees foster safer and more sociable neighborhoods. Views of trees ease mental fatigue and stress, help concentration, reduce sickness, and provide settings for recreation and relaxation. Trees also help reduce noise, provide a refuge for wildlife, and help connect residents with their natural environment.

Street trees in Bellevue increase property values annually by \$86,049.



Diversity Improves Urban Forest Resilience

A diverse palette of trees helps guard against catastrophic loss to insects and diseases or environmental stresses. A general guideline for urban forest diversity is no more than 5% of any one species, 10% of any one genus.

Maple, ash, and linden trees are over-represented on Bellevue's streets. This jeopardizes \$316,530 of the city's urban forest's benefits from pests such as emerald ash borer (EAB) and Asian longhorned beetle (ALB). Enlist the public to help increase Bellevue's forest resilience by planting less common trees on their own property.